

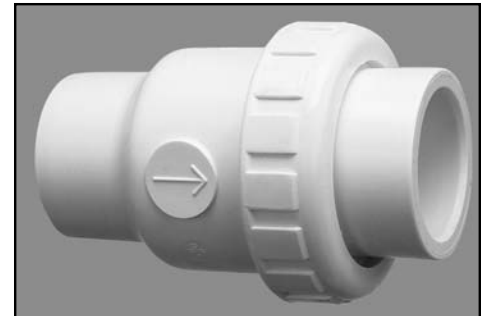
# SINGLE UNION SPRING CHECK VALVES

MADE IN  
NORTH AMERICA



PRODUCTS

Material:	Grade 1 PVC (White)
O-RINGS:	EPDM
Compression Spring:	S.S. 302
Pressure Rating:	150 P.S.I



**FEATURE:**

- Available with multiple spring loads.
- Flow check can be reversed by switching poppet assembly.
- 1 1/2" body can be glued onto 1 1/2" pipe or into 2" socket.
- **NEW** - Valve packaged with 3 spring loads ( 1/4 lb, 1/2lb and 2 lb) - "TRI".
- 1 1/2" model = 1 PSI headloss @ 60 GPM
- 2" model = 1 PSI headloss @ 90 GPM

1 1/2"				2"			
SKT X SKT				SKT X SKT			
MODEL #	SPRING LOAD	LIST PRICE	QTY. PER CARTON	MODEL	SPRING LOAD	LIST PRICE	QTY PER CARTON
150-CV-025	1/4 LB	\$23.00	30	200-CV-025	1/4 LB	\$26.50	18
150-CV-050	1/2 LB	\$23.00	30	200-CV-050	1/2 LB	\$26.50	18
150-CV-200	2 LB	\$24.02	30	200-CV-200	2 LB	\$28.39	18
150-CV-350	3 1/2 LB	\$24.02	30	200-CV-350	3 1/2 LB	\$28.39	18
150-CV-500	5 LB	\$24.02	30	200-CV-500	5 LB	\$28.39	18
150-CV-1000	10 LB	\$24.02	30	200-CV-1000	10 LB	\$28.39	18
150-CV-TRI	1/4 - 2 LB	\$27.50	30	200-CV-TRI	1/4 - 2 LB	\$32.50	18

**High corrosion resistant 2 lbs valves - teflon coated spring (viton seals)**

SIZE	MODEL #	SPRING LOAD	LIST PRICE	QTY. PER CARTON
1 1/2"	150-CV-200CR	2 LB	\$35.60	30
2"	200-CV-200CR	2 LB	\$39.60	18
1 1/2"	150-CVC-200CR	2 LB	\$39.60	30 CLEAR BODY
2"	200-CVC-200CR	2 LB	\$43.60	18 CLEAR BODY

C.S.A approved

**NEW CLEAR BODY CHECK VALVES**

SIZE	MODEL #	SPRING LOAD	LIST PRICE	QTY. PER CARTON
1 1/2"	150-CVC-025	1/4 LB	\$27.00	30
2"	200-CVC-025	1/4 LB	\$30.50	18
1 1/2"	150-CVC-TRI	1/4-2LB	\$31.50	30
2"	200-CVC-TRI	1/4-2LB	\$36.50	18

