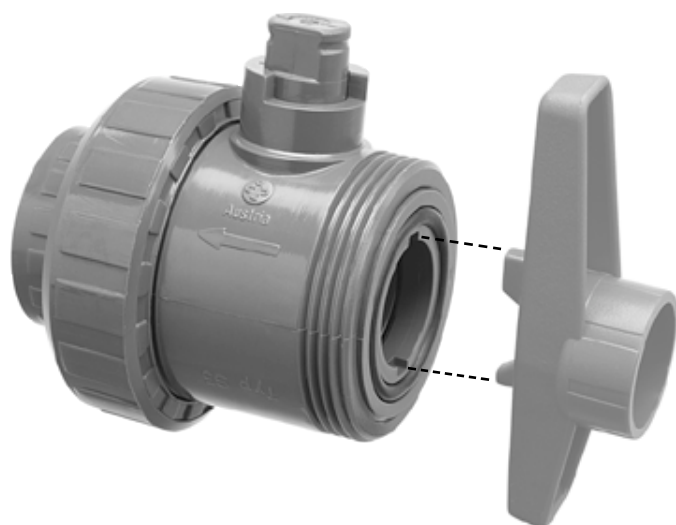


ECONOMY TRUE UNION BALL VALVES S5 SERIES

Size:	3/8" to 4"
Material:	Grade 1 PVC - NSF 61
O-RINGS:	EPDM
Ball Seats:	Polyethylene
Pressure Rating:	200 P.S.I (3/8" to 2")
	150 P.S.I (2 1/2" to 4")
Adjustable Ball seat pressure (Safe Block)	



FEATURE:

- Handle can be used as tool to adjust threaded seal carrier.

WATER APPLICATION

SKT X SKT	FIP X FIP				
SIZE	MODEL #	LIST PRICE	MODEL #	LIST PRICE	QTY. PER CARTON
3/8"	12-0012	\$17.00	12-0013	\$29.80	12
1/2"	12-0027	\$17.00	12-0028	\$31.04	12
3/4"	12-0042	\$18.00	12-0043	\$32.77	10
1"	12-0057	\$23.00	12-0058	\$44.20	10
1 1/4"	12-0067	\$34.00	12-0068	\$47.17	10
1 1/2"	12-0097	\$34.00	12-0102	\$58.60	25
2"	12-0119	\$45.00	12-0120	\$73.51	16
2 1/2"	12-0135	\$150.00	12-0136	\$204.37	4
3"	12-0262	\$200.00	12-0264	\$324.04	1
*4"	12-0400	\$350.00	12-0401	N.A.	1

* 3" valve with 4" end connector