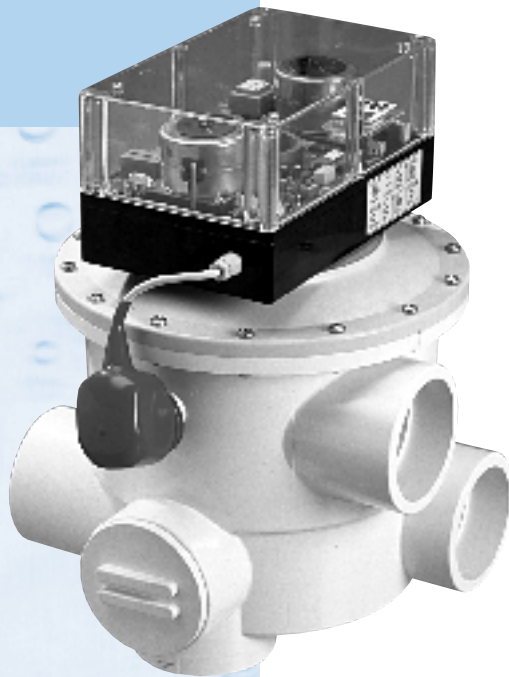


SUPERSTAR-E-6000/F PRESSURE OR TIMER ACTIVATED 24 VAC (3" VALVES ONLY)



3" socket only

The E-6000/F series Superstar Automatic Backwash valves are Timer controlled (digital two channel 7 day 24 hour programmable timer for backwash initiation in channel 1 and recirculation pump in channel 2) and pressure controlled (adjustable pressure switch) systems which have the actuator and the controller in one enclosure. An integrated touch pad switch allows the operator to perform standard switching tasks on the unit.

The internally controlled pump relay (max. 6.3 Amp.) must control the recirculation pump's on/off sequence during the valve's backwash and rinse functions. An external pump contactor must be provided by the installer (Superstar 24V signal will provide operation). The auxiliary circuit available is a double throw relay, which can be used for external ball valve control (open make up water valves during backwashing, close backwash line during filtration), heater and chemical feeder control (off during backwashing) or system monitoring through PLC's.

Equipped with adjustable potentiometers to set Backwash (1 min - 11 min.) and Rinse (20 sec - 4 min.).

All manufacturing, assembly and testing is done at our facilities for quality assurance. Praher has been successfully developing and manufacturing automatic backwash valves since 1982.

New:

- Contacts for 2nd backwash pump.
- Fireman cycle delay (Allows heater to cool down prior to backwashing. Internal logic will shut heater off with pump running until "time" expires. Build in potentiometer allows operator to set "time" from 25 seconds to 25 minutes.

FEATURES:

- Timer and pressure controlled activation of backwash
- Adjustable (1min. - 11 min.) backwash
- Adjustable (20 sec. - 4 min.) rinse
- Water and chemical resistant pad switch
- On - Off pump control circuit
- Auxiliary equipment circuit available
- CE Approved (European Electrical Code)
- Low water cut off circuit
- ISO 9001 facility
- Tandem (multiple filters) wiring Features (Master/Slave)
- WIRING DIAGRAM AND MORE DATA SEE PAGE 71

PART #	VALVE SIZE	DESCRIPTION	LIST PRICE
SSM-E6003	3"	PRESS. & TIMER CONTR./24V/SM-30-AO/#13.0668	\$7638.00