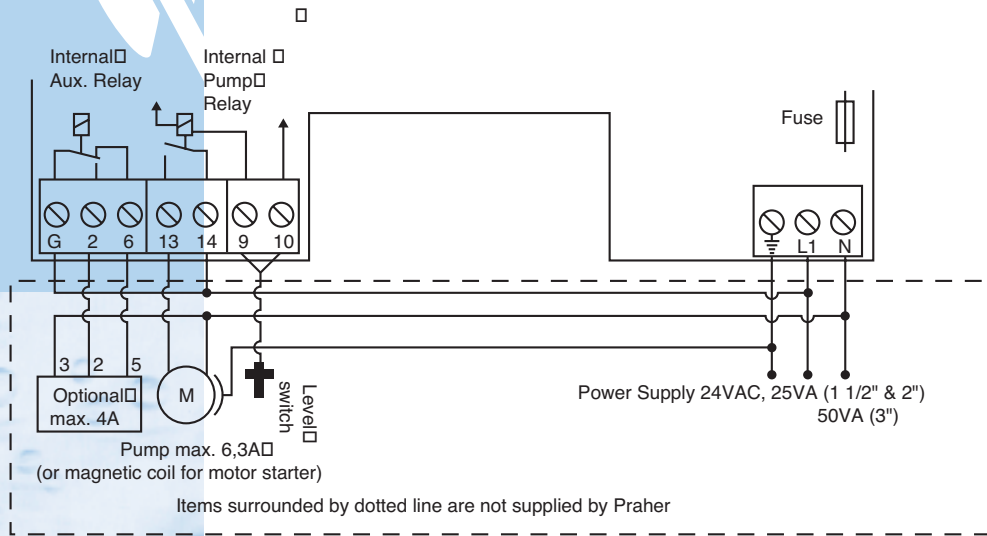


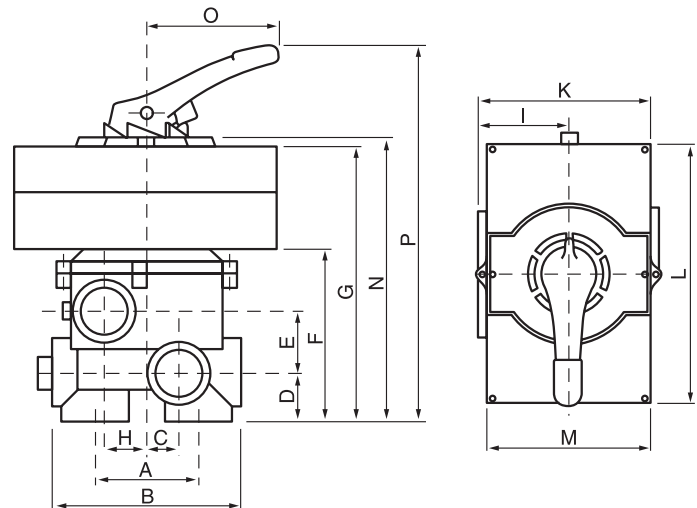
# SUPERSTAR E-6000/F (1 1/2" & 2")



Power supply	24 VAC, 50 or 60Hz
Pump control relay (Terminal 13 & 14)	max. 6.3 Amp.
Ball valve auxiliary relay (Term. G, 2, & 6)	max. 4 Amp.
<b>Available with the following pressure switches:</b>	
MSPS-FF-100SS	range: 0.69 - 6.9 bar (10 psi - 100 psi)
MSPS-FF-15SS	range: 0.10 - 1.0 bar (1.45 psi - 14.5 psi)
Enclosure	IP 54
Valve size	1 1/2" (70 GPM), 2" (120 GPM)
Backwash time	adjustable with built in potentiometer: 1 min. - 11 min.
Rinse time	adjustable with built in potentiometer: 20 sec.-4 min. 20 sec.
Delayed pump cut in	20 sec.
Pump and Backwash timer	"Graesslin" 2 channel digital timer with battery backup
Max. Valve operating pressure	50 psi
Fireman cycle delay time	adjustable with built in potentiometer: 25 sec. - 25 min.

## SIDE MOUNTED VALVES

	1 1/2"	2"
	inch	inch
A	3.4	4.33
B	7.16	8.98
C	1.26	1.5
D	1.85	2.36
E	2.36	3.19
F	6.46	8.27
G	10.63	12.28
H	1.5	1.34
I	3.44	4.53
K	6.89	9.05
L	10.04	9.84
M	6.3	6.3
N	11.02	12.68
O max.	5.31	5.31
P max.	14.88	16.53
weight.	13 lbs.	14 lbs.



Also available are 1 1/2" and 2" top mounted valves.